

# Map 6: Habitat

## Town of Whitneyville Comprehensive Plan

Data Sources: Maine Office of GI, UMM GIS Center, USGS, WCCOG  
 Universal Transverse Mercator - Zone 19N North American Datum - 1983

- Roads
- Town Lines
- Rivers, Ponds
- Down East Sunrise Trail
- Contours (20 ft)
- Perennial Streams

### Essential Habitat

- Atlantic Salmon Habitat

### Significant Habitat

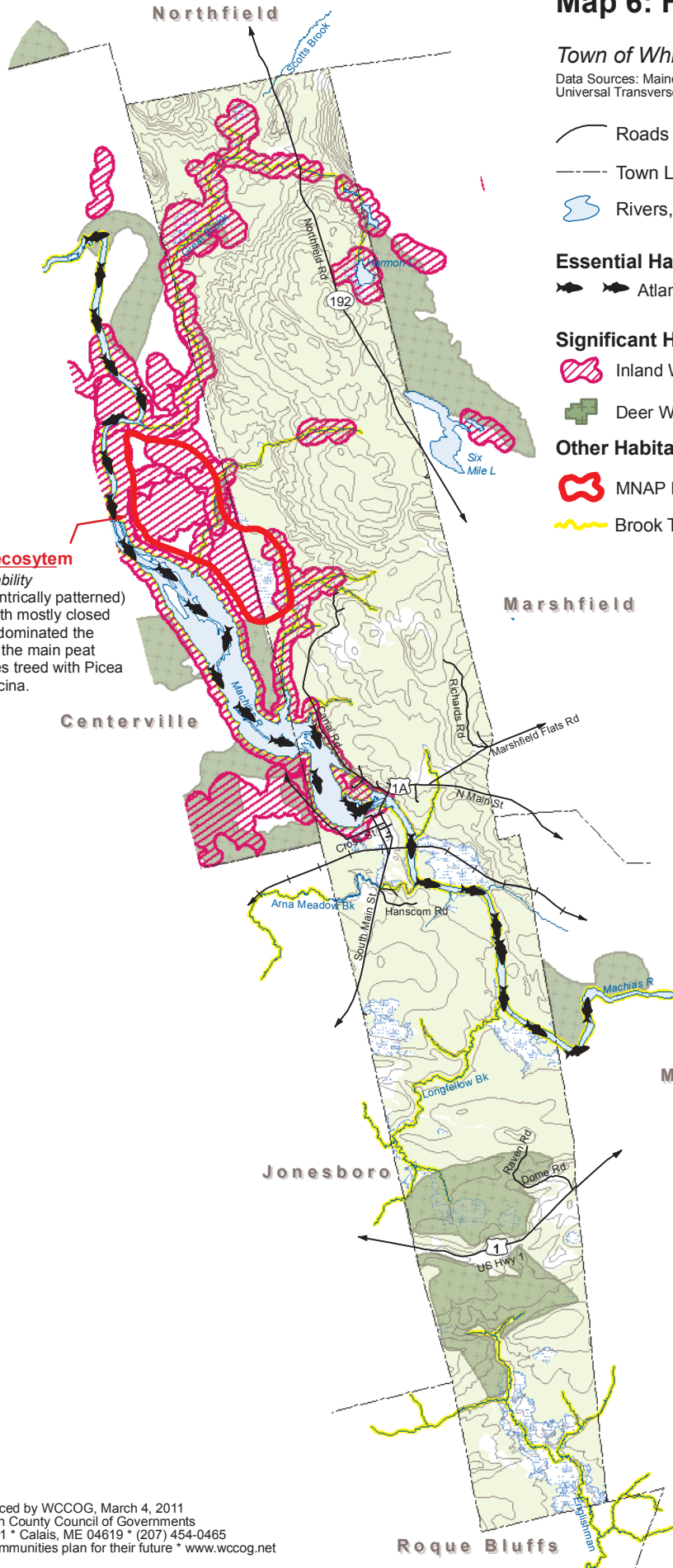
- Inland Wading Bird and Waterfowl
- Deer Wintering Area

### Other Habitat

- MNAP Rare & Exemplary Communities
- Brook Trout Habitat

### Raised level bog ecosystem

*B- Good estimated viability*  
 Raised (but not concentrically patterned) peatlands in basins with mostly closed drainage. Sphagnum dominated the ground surface and is the main peat constituent. Sometimes treed with *Picea mariana* and *Larix laricina*.



Centerville

Marshfield

Machias

Jonesboro

Roque Bluffs

